

See general rules and regulations for entry time limits, classifications and awards.

In the event that a competitor earns more than one title, only one “National Champion” item will be awarded.

Solos

All division/classification winners	Titled “National Champion” and eligible to purchase “National Champion” item.
All winners of division/classifications with 10+ entries.	Will be awarded “National Champion” item.

Duets, Trios, Ensembles and Social Officers

All division/classification winners	Titled “National Champion” and eligible to purchase “National Champion” item.
-------------------------------------	---

Dance Officers

All division/classification winners	Titled “National Champion” and eligible to purchase “National Champion” item.
Overall National Champion Officer Group	Will be awarded “National Champion” item.

Teams

All division/classification winners	Titled “National Champion” and eligible to purchase “National Champion” item.
All winners of HS Varsity division/classifications with 5+ teams	Will be awarded \$300 CP Contest Entry Credit and “National Champion” item.
Overall National Champion Team	Will be awarded \$750 CP Contest Entry Credit and “National Champion” item. <i>STUDIO- minimum of 50 team routines</i> <i>CLASSIC PUBLIC- minimum of 25 team routines</i> <i>SELECT PUBLIC- minimum of 25 team routines</i>

In addition to the above general prop section - the following guidelines are specific to the TX Nationals facility:

Props:

For props that shed (poms, confetti, streamers, flowers) please have a team representative scheduled to clean the floor following performance.

The use of glitter, water, powder, pyrotechnics and/or facility electrical outlets is strictly prohibited.

Minimal prop storage will be available.

Prop drop-off information and times will be sent the week of contest.

Curtains:

Curtains and wings will be provided.

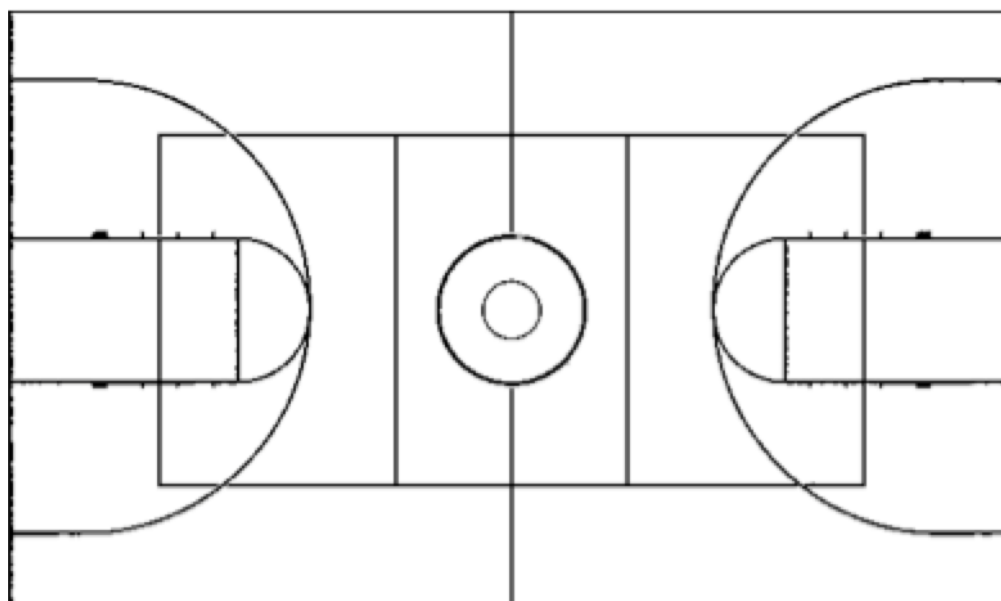
Performance Floor:

You will be responsible for any damage to the performance floor due to improperly padded props or other negligence. Directors you will be asked to sign a contract acknowledging and agreeing to the facility property damage policies.

Main performance floor will be a gym floor size Marley 84 x 50.

The following gym floor markings will be taped in the main performance area.

The secondary performance areas will most likely be ballroom carpet with limited gym floor markings.



2022 ESTIMATED PERFORMANCE SCHEDULE



Thursday

Studio teams will perform some of their routines.

Some local and/or approved traveling teams may perform solo and ensembles.

Estimated performance schedules and times will be communicated in advance.



Friday

Public school teams will perform some of their routines.

The following division / classification will perform all of their team routines:

HS Select Varsity

The following division / classification may perform some of their team routines:

Middle School

Pep Squads

Junior Varsity

Co-Ed

Crew

HS Elite Teams

HS Novice Varsity

HS Classic Varsity

Studio teams will perform the remainder of their routines.

Estimated performance schedules and times will be communicated in advance.



Saturday

The remainder of all the public school routines will perform.

Overall National Champion by Style Finalists

3-5 Top Scoring HS Select Team's in the following styles will be re-evaluated for Overall National Champion by Style.

Jazz, Lyrical, Kick, Modern, Pom, Hip Hop, Military, Open, Prop, Novelty, Contemporary

Overall National Champion Team Finalists

3-5 HS Select Overall Top Scoring Teams will perform their 3 highest scoring team routines.

Routines will be re-evaluated for Overall National Champion HS Select Team.

Estimated performance schedules and times will be communicated Friday, after awards.

AWARDS PRESENTED



Friday

All National Champion Studio Awards

All Select Officer and Team Awards

All Select HS Team Style Finalists

Overall National Champion
HS Select Team Placement
** Not including finalists**

Overall National Champion
HS Select Team Finalists will be
announced in Alpha Order



Saturday Afternoon

All National Champion Awards for:

Middle School

Pep Squads

Junior Varsity

Co-Ed

Crew

HS Elite Teams

HS Novice Varsity

HS Classic Varsity

Overall National Champion HS
Classic Team and Placement



Saturday Evening

Overall National Champion by Style Winners

Top Scoring Overall National Champion Select Team Placement

Overall National Champion Select Team

ADJUSTED SCHEDULE TIMELINE

The see event details page for the adjusted schedule timeline.
<https://crowdpleasersdance.com/schedule/>

DRESSING ROOMS

Communal dressing space will be available.

Semi-Private/ Private dressing space may be available for an additional cost